

# Mortagne-sur-Gironde / Vitrezay

## Canal des 2 Mers by bike - Atlantic / Mediterranean sea

---



From Mortagne-sur-Gironde to Vitrezay, the scenery is characterized by great expanses of marshes backed by hills covered with vineyards and crops. A number of little marinas along here provide access to the Gironde Estuary and offer places to pause.

### The route

The stretch between Mortagne-sur-Gironde and Port Maubert is set to be completed. From Port Maubert to Vitrezay, the route alternates between greenways and quiet roads.

**Départ**  
Mortagne-sur-Gironde

**Arrivée**  
Vitrezay

**Durée**  
1 h 40 min

**Distance**  
24,88 Km

**Niveau**  
I cycle often

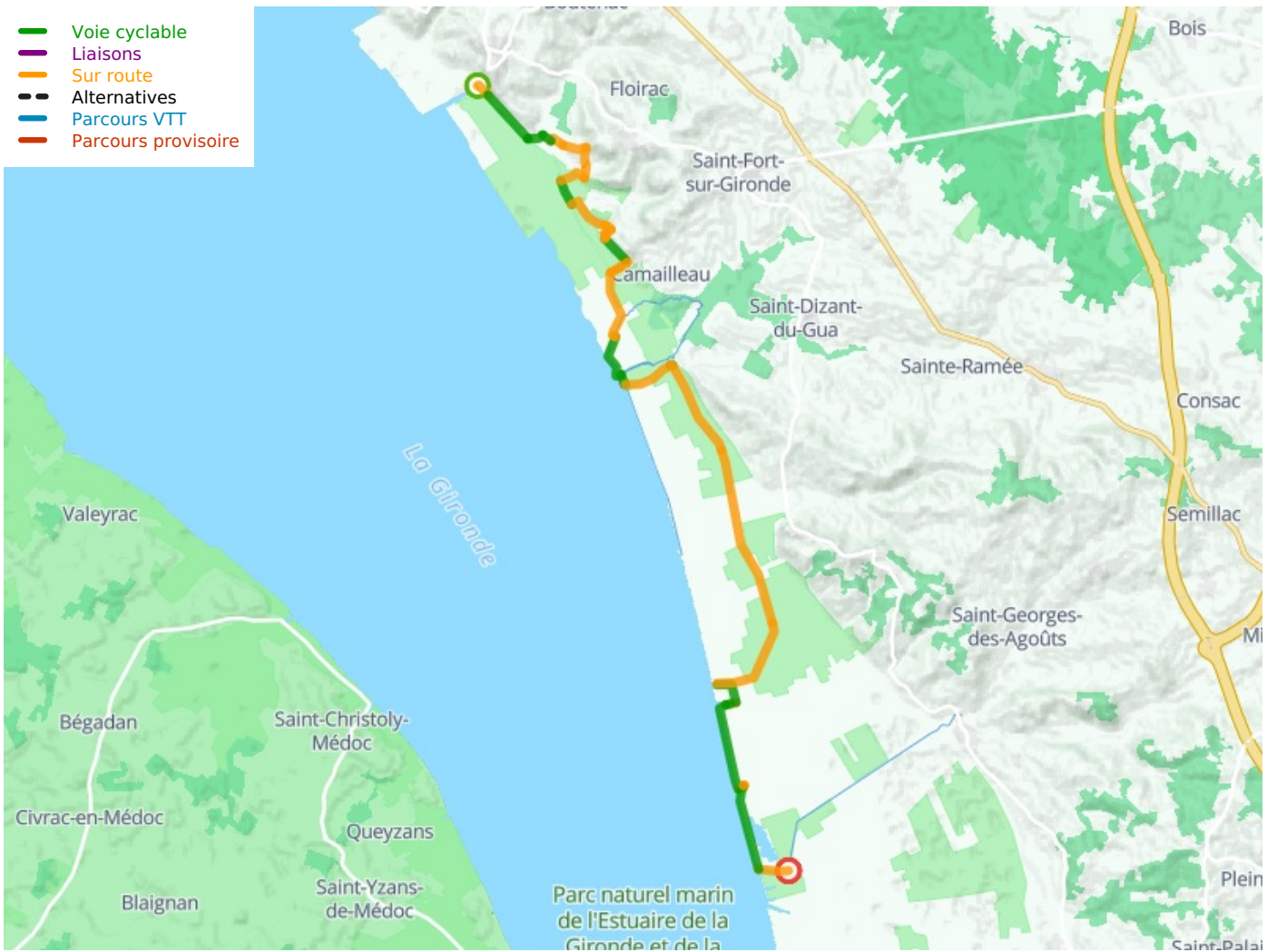
### SNCF train station

No station on this stage

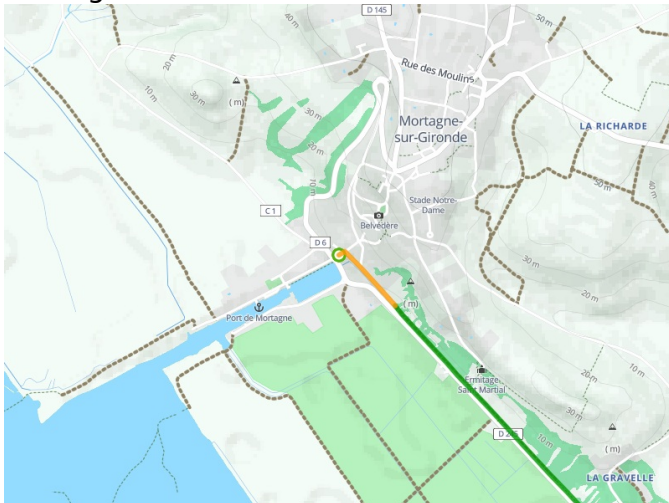
### Tourist offices

- [Office de Tourisme de Mortagne sur Gironde](#)

- Voie cyclable
- Liaisons
- Sur route
- - - Alternatives
- Parcours VTT
- Parcours provisoire



**Départ**  
Mortagne-sur-Gironde



**Arrivée**  
Vitrezay

